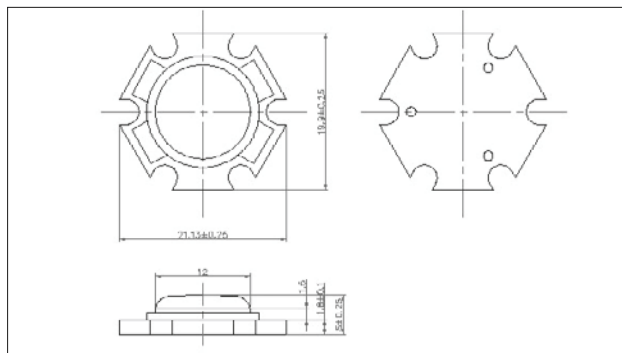
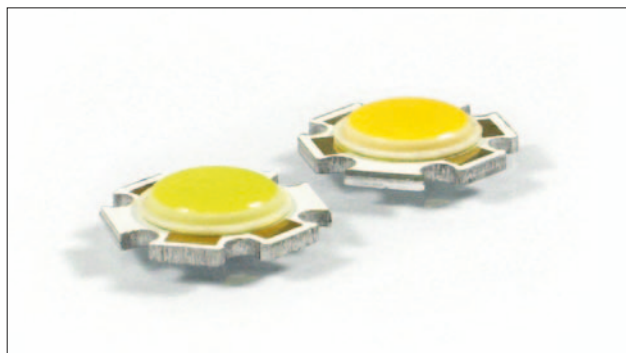


116-0005-30/60

High Power LED - 5W



Allgemeine Informationen | general information

Abmessungen | *dimensions*: 21,13 x 19,9 x 5,0mm (±0,25mm)
 Material der Platine | *material of PCB*: Metall
 Form der Platine | *form of PCB*: Star
 Einsatztemperatur | *operating temperature*: -40 ~ +80°C
 Lagerungstemperatur | *storage temperature*: -40 ~ +110°C

Eigenschaften LED | parameter LED - 116-0005-30 - (Ta=25°C)

Messwerte bei If=700mA | data based on If=700mA

Parameter <i>parameter</i>	Symbol <i>symbol</i>	Minimum <i>minimum</i>	Typisch <i>typical</i>	Maximum <i>maximum</i>	Einheit <i>unit</i>
forward voltage	Vf	5,6	6,6	7,6	V
power dissipation	Pd	4,48	5	5,56	W
luminous flux	Im	300	350	400	lm
CRI	Ra		50		
color temperature	CCT	2850	3000	3250	K
beam angle			120°		
esd protection	esd		2000		V

Eigenschaften LED | parameter LED - 116-0005-60 - (Ta=25°C)

Messwerte bei If=700mA | data based on If=700mA

Parameter <i>parameter</i>	Symbol <i>symbol</i>	Minimum <i>minimum</i>	Typisch <i>typical</i>	Maximum <i>maximum</i>	Einheit <i>unit</i>
forward voltage	Vf	5,6	6,6	7,6	V
power dissipation	Pd	4,48	5	5,56	W
luminous flux	Im	300	350	400	lm
CRI	Ra		72		
color temperature	CCT	5650	6000	6300	K
beam angle			120°		
esd protection	esd		2000		V