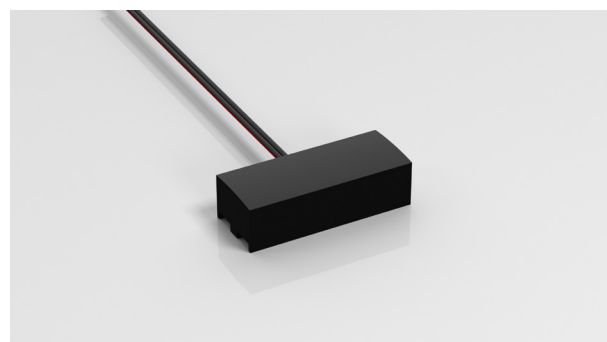
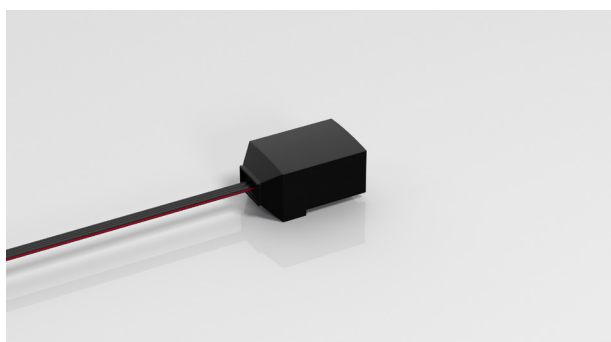
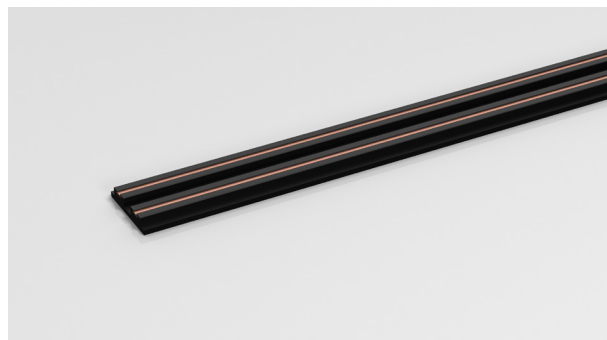
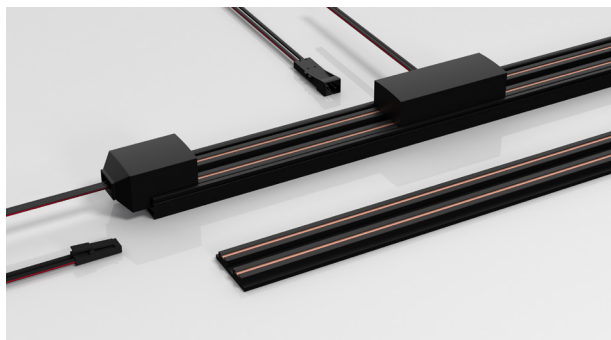


Stromschiene mag. Abnehmer mit 3m Tape



Technische Daten / technical data

	Schiene / track	Einspeiser / input	Abnehmer / output
Maße / measurements 3M (LxBxH):	20x4x2000mm	15x18x29mm	15x18x45mm
Leitungen / Cable		50-2000mm	
Stecker / connectors	div. nach Rücksprache		
Voltage / voltage:	5-48V		
Strom / current:	8A	8A	3A
Befestigung / fixing:	3M Tape	clip	magnetisch
Farben / colors	standard: schwarz / black (sonder: anthrazit / anthracite • weiß / white)		

